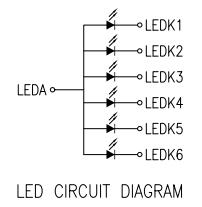
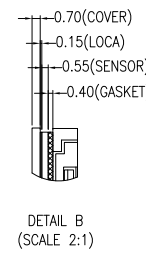
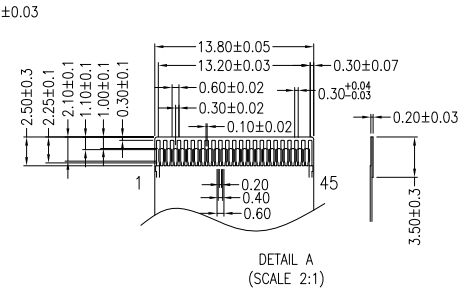
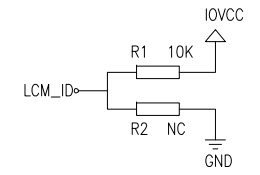
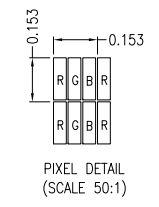
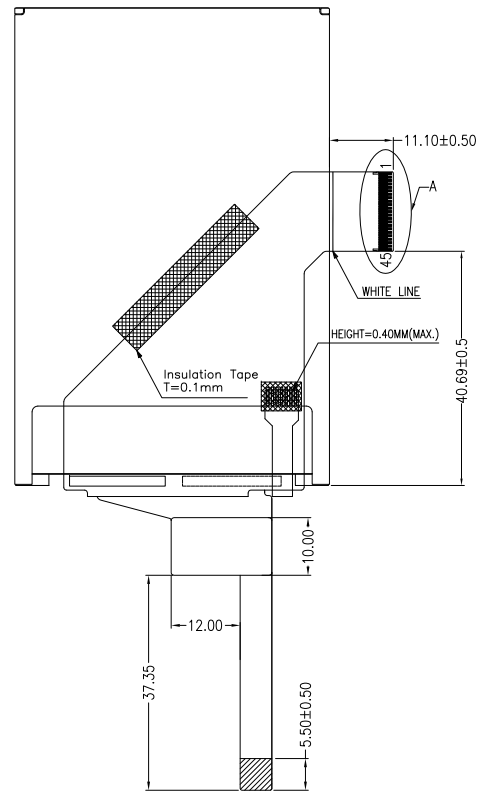
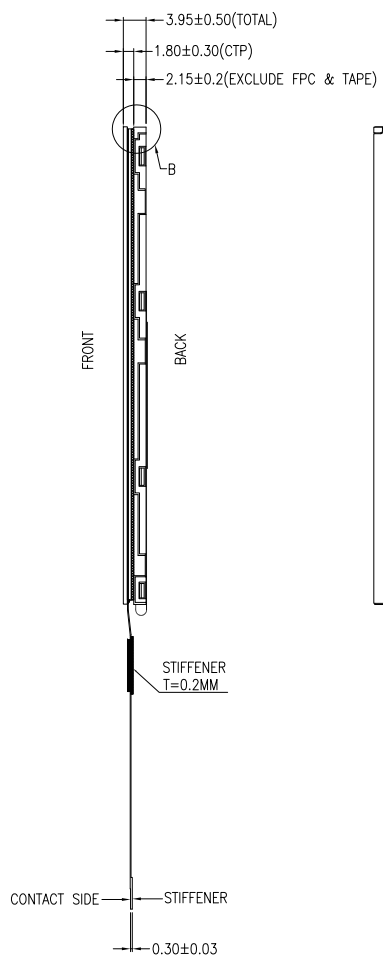
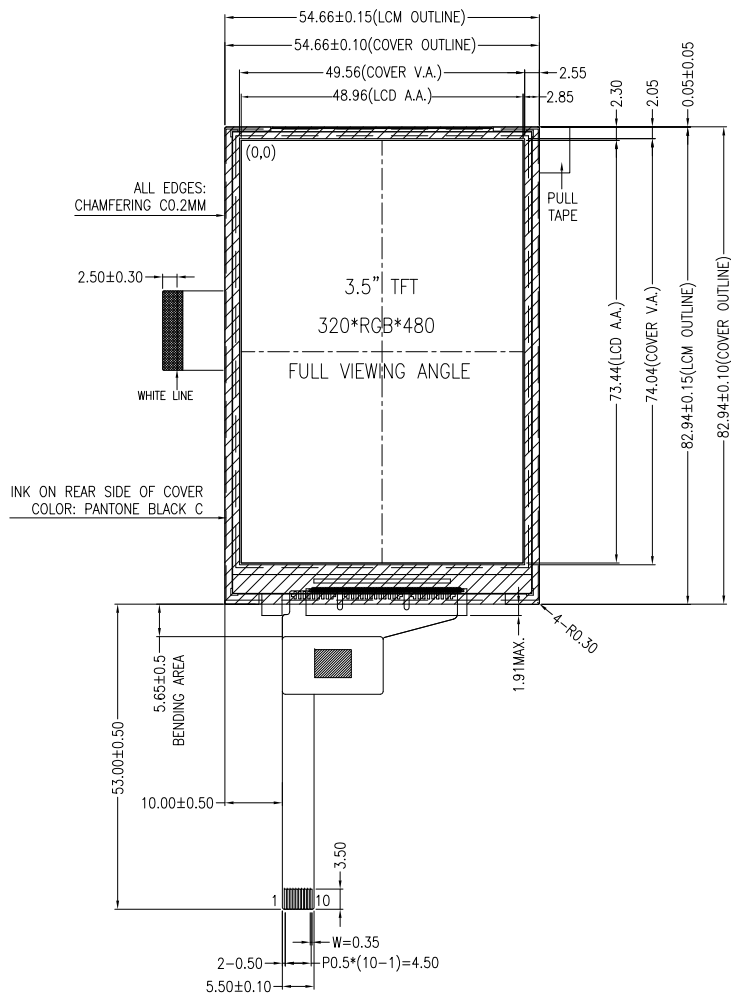


NO MECHANICAL HOUSING TO HOLD THE TFT AND THE TOUCH PANEL ON THIS PRODUCT, SO THE END UNITS MECHANICAL DESIGN MUST INCLUDE A HOUSING FOR PREVENTING THE SEPARATION OF THE TFT AND THE TOUCH PANEL.



PIN DESCRIPTION FOR CTP		PIN DESCRIPTION FOR TFT	
PIN	SYMBOL	PIN	SYMBOL
1	VSS	1	FLM
2	VDD	2	GND
3	SCL	3	ENABLE
4	NC	4	DOTCLK
5	SDA	5	VSYN
6	NC	6	GND
7	RST	7	HYSNC
8	NC	8	IM0
9	INT	9	IM1
10	VSS	10	IM2
11		11	IOVCC
12		12	VCC
13		13	SDI
14		14	SDO
15		15	D17
16		16	D16
17		17	D15
18		18	D14
19		19	D13
20		20	D12
21		21	D11
22		22	D10
23		23	D9
24		24	D8
25		25	D7
26		26	D6
27		27	D5
28		28	D4
29		29	D3
30		30	D2
31		31	D1
32		32	DO
33		33	RESET
34		34	RD
35		35	WR/SCL
36		36	RS
37		37	CS
38		38	LEDK6
39		39	LEDK5
40		40	LEDK4
41		41	LEDK3
42		42	LEDK2
43		43	LEDK1
44		44	LEDA
45		45	LCM_ID

- NOTES FOR TFT:
1. DISPLAY TYPE: TFT, TRANSMISSIVE, NORMALLY BLACK
 2. OPERATING VOLTAGE: IOVCC=1.8V, VCC=2.8V (TYP.)
 3. VIEWING DIRECTION: FULL VIEWING ANGLE
 4. DRIVER IC: HX8357D
 5. LED BACKLIGHT: WHITE LED, If=120mA, Vf=2.9V~3.3V
 6. TOP POLARIZER SURFACE TREATMENT: ANTI-GLARE
 7. RECOMMEND MATCHING CONNECTOR: FH26-45S-0.3SHW OR EQUIVALENT

- NOTES FOR CTP:
1. 7.0 INCH PROJECTIVE CAPACITIVE TOUCH PANEL
 2. COVER GLASS + SENSOR GLASS + FPCA
 3. OPERATING VOLTAGE: VDD=2.8V~3.3V
 4. DRIVER IC: FT5446DQS-P03
 5. INTERFACE: IIC
 6. RESOLUTION: 320*480
 7. MULTI FINGER: UP TO 5
 8. HARDNESS OF COVER SURFACE: ≥6H(750g)
 9. FIRMWARE FILE: MI0350CMP-C1(FT5446DQS-P03)
 - FIRMWARE_V04_20200426_ALL.BIN

- NOTES FOR OTHERS:
1. OPERATING TEMP.: -20°C ~ 70°C
 2. STORAGE TEMP.: -30°C ~ 80°C
 3. SURFACE LUMINANCE: 300 CD/M² (TYP.) WITH CTP
 4. ONLY THE SINGLE LAYER AREA ON FPC IS BENDABLE AND THE MINIMUM BEND RADIUS IS 1.5MM
 5. GENERAL TOLERANCE: ±0.30MM
 6. ROHS COMPLIANT

Mi-T MULTI-INNO TECHNOLOGY CO., LTD.

DRAWN BY:	CAROL	2022.11.28		MODULE P/N:	MI0350AKT-4CP3
CHECKED BY:			SCALE : 1/1	DESCRIPTION:	TFT + CTP MODULE
APPROVED BY:			UNIT: mm		
VERSION NO.:	01		SHEET NO.: 1/1		

01	FIRST ISSUE	CAROL	2022.11.28
VER.	REVISED DESCRIPTION	REVISOR	DATE